

## Zinc & Nitrous Oxide: The Development of Breast Cancer

Cusack PTE\*

BScE, DULE, Saint John, Canada

**\*Corresponding author:**

Paul TE Cusack,  
BScE, DULE, 23 Park Ave., Saint John, NB E2J  
1R2, Canada

Received: 02 Jan 2024

Accepted: 27 Jan 2024

Published: 02 Feb 2024

J Short Name: COO

**Copyright:**

©2024 Cusack PTE, This is an open access article distributed under the terms of the Creative Commons Attribution License, which permits unrestricted use, distribution, and build upon your work non-commercially.

**Citation:**

Cusack PTE, Zinc & Nitrous Oxide: The Development of Breast Cancer Clin Onco. 2024; 7(8): 1-1

**Keywords:**

Breast cancer; Oil

**1. Abstract**

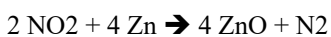
This paper provides the cause of breast cancer. It is mainly caused by excess NO<sub>2</sub> in the air we breathe that comes from industry. Individuals should not take zinc supplements nor drink excessive water. The amount of sugar intake should be minimized to avoid the chemical reactions that may lead to breast cancer in both men and women.

**2. Introduction**

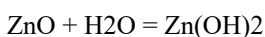
I've been taking Zinc supplements for about 1 month. I noticed that there is a lump developing in my breast near the ridge of the nipple. I did some balanced chemical equations and discovered that the combination of Zinc, Water, and NO<sub>2</sub> in polluted Oil Refinery air could lead to breast cancer. I drink a lot of water and breathe polluted air all day and night for 6 years now.

Breast cancer is most common in developed countries (US, Canada, Northern Europe, Australia). We also see the rise of breast cancer rates in developing countries as their industry grows.

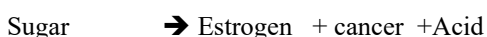
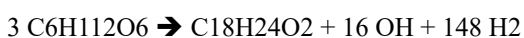
Here is the chemistry:



Air Pollution



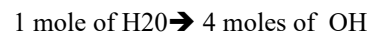
Water



$$3(280.95) \times 6.022 = 5075.6427$$

$$M = \ln t$$

$$t = e^M = e^{5.075} = 160 = \text{O}_2$$



$$4 \times 6.022 = 24.088$$

$$M = \ln t$$

$$t = e^M = e^{-0.24088} = 127.2368 = 4/\pi = M/t$$

$$t^2 = M$$

$$127.23^2 = 1.618 = \text{root of the GMP}$$

$$t^2 - t - 1 = E$$

$$(1.618)^2 - 1.618 - 1 = 0$$

Zinc strengthens the immune system which helps with combatting Dementia (HSV-1). Zinc is linked to Dementia. Dementia is linked to Breast Cancer by a 30% increase in cases. Here are the calculations.

$$t = 127.2368 \times 30\% \text{ increased risk of Dementia} = 1/261 = t$$

$$E = 261$$

$$\text{Zn } 65.39 \text{ g/mol} \times 6.022 = 3937 = M$$

$$t = e^M = e^{0.3937} = 1.4825$$

$$\Delta t = 1.618 - 1.4825 = 135.4 = 1/261$$

$$E = 261$$

**3. Conclusion**

So, Breast Cancer in men and women may be caused by Zinc, drinking excess water, air pollution, and excess sugar in the diet.